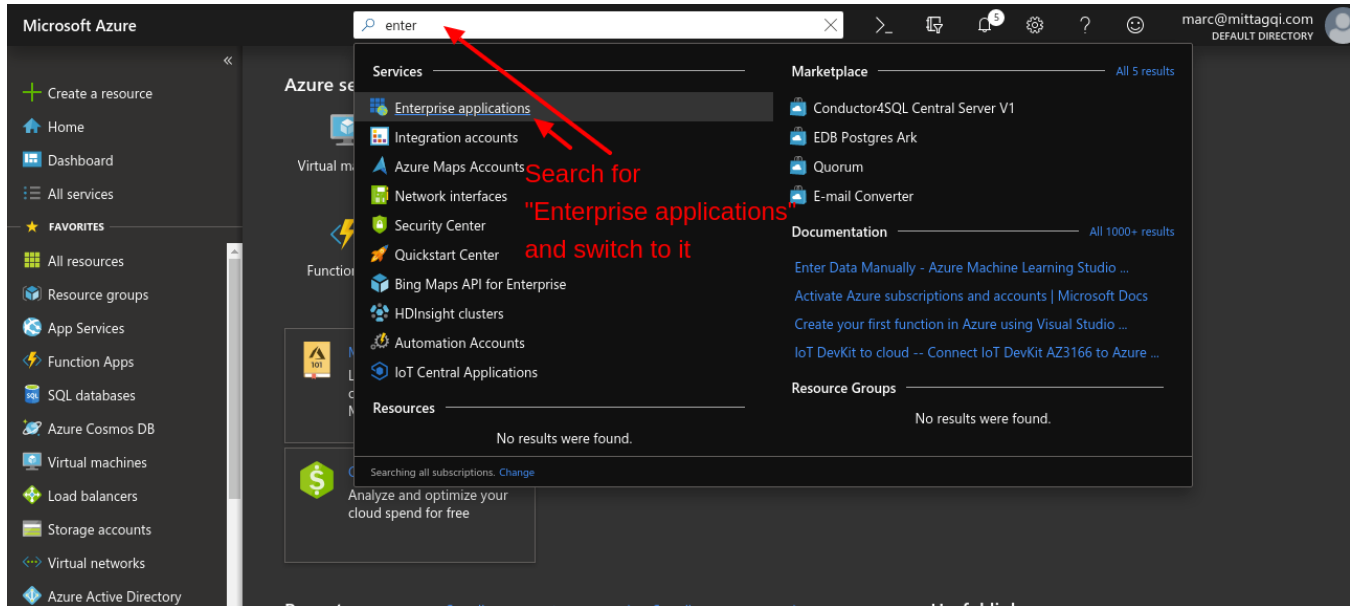


Assign the appropriate translate5 roles to your users in Azure

You can assign the translate5 roles for your users directly in Azure. If Azure transfers roles for your users to translate5 (as it does with the above configuration) translate5 will set these roles with each login via Azure in translate5 - and change existing roles for the user and ignore the roles that are set for the OpenID configuration for the corresponding client in translate5.

Please note: Signing in via Azure with the following steps does only work for normal users in Azure, not for Guest users. Maybe there are some tweaks in Azure that allow it for Guest users as well - if someone finds out please add to this documentation.



Microsoft Azure

Home > Enterprise applications - All applications

Enterprise applications - All applications

Default Directory - Azure Active Directory

Overview

Manage

- All applications
- Application proxy
- User settings
- Security
- Conditional Access
- Activity
- Sign-ins
- Usage & insights
- Audit logs
- Access reviews

+ New application Columns

Application Type: Enterprise Applications Applications status: Any Application visibility: Any Apply

Reset

First 50 shown, to search all of your applications, enter a display name or the application ID.

NAME	HOMEPAGE URL	OBJECT ID	APPLICATION ID
AlexTestApp		bca8821e-c235-4393-a2e4-...	d1a20082-1fba-4bd...
Graph explorer	https://developer.microsoft.com/en...	9e16bb45-aa10-4ca1-8f70-a...	de8bc8b5-d9f9-48b...
Marc's Translate5		f95e38a7-8419-4746-acdc-4...	e9bf7868-fb6a-4c2a...
Office 365 Exchange C	http://office.microsoft.com/outlook/	3620bbe-d3b5-404c-a14b-...	00000002-0000-0ff1...
Office 365 Manageme		d6d8b0ee-551a-45db-a90d-...	c5393580-f805-440...
Office 365 SharePoint	http://office.microsoft.com/sharepo...	00d7162f-4761-477e-aa72-c...	00000003-0000-0ff1...
Outlook Groups		9a77b225-e92f-4173-92d7-7...	925eb0d0-da50-460...

Select your translate5 Azure app you just created and switch to it.

Microsoft Azure

Home > Enterprise applications - All applications > Marc's Translate5 - Overview

Marc's Translate5 - Overview

Enterprise Application

Overview

Getting started

Manage

- Properties
- Owners
- Users and groups
- Provisioning
- Application proxy
- Self-service
- Security
- Conditional Access
- Permissions
- Token encryption (Preview)

Delete

Total Users

0

App usage between 4/4/2019 and 5/4/2019

100 80 60 40 20

MARC'S TRA...

Click on "Total Users" to assign existing Azure Users as users that are allowed to use translate5

Microsoft Azure

Search resources, services, and docs

Home > Enterprise applications - All applications > Marcs Translate5 - Overview > Users and groups

Users and groups

Marcs Translate5

+ Add user Edit Remove Update Credentials Columns

The application will appear on the access panel for assigned users. Set 'visible to users?' to no in properties to prevent this. →

First 100 shown, to search all users & groups, enter a display name.

DISPLAY NAME	OBJECT TYPE	ROLE ASSIGNED
No application assignments found		

Click on "Add user" - please note: This user must already exist inside of Azure ActiveDirectory AND it MUST NOT be a guest user. Family name and firstname should already be defined for this existing Azure user as well as the email. Azure does not allow to define a gender for a user - therefore all users will be assigned female gender in translate5, which is translate5 default.

Microsoft Azure

Search resources, services, and docs

Home > Enterprise applications - All applications > Marcs Translate5 - Overview > Users and groups > Add Assignment

Add Assignment

Default Directory

Users and groups
None Selected

Select Role
None Selected

Assign

Select a user, that should have access to translate5

Microsoft Azure

Search resources, services, and docs

Home > Enterprise applications - All applications > Marcs Translate5 - Overview > Users and groups > Add Assignment > Users and groups

Create a resource

Home

Dashboard

All services

FAVORITES

- All resources
- Resource groups
- App Services
- Function Apps
- SQL databases
- Azure Cosmos DB
- Virtual machines
- Load balancers
- Storage accounts
- Virtual networks
- Azure Active Directory

Add Assignment

Default Directory

Users and groups
None Selected

Select Role
None Selected

Select your user and click "Select"

Select member or invite an external user

max

MM Max Mustermann
max@marcmittagqi.onmicrosoft.com

Selected members:

MM Max Mustermann
max@marcmittagqi.onmicrosoft.com Remove

Assign Select

Microsoft Azure

Search resources, services, and docs

Home > Enterprise applications - All applications > Marcs Translate5 - Overview > Users and groups > Add Assignment

Create a resource

Home

Dashboard

All services

FAVORITES

- All resources
- Resource groups
- App Services
- Function Apps
- SQL databases
- Azure Cosmos DB
- Virtual machines
- Load balancers
- Storage accounts
- Virtual networks
- Azure Active Directory

Add Assignment

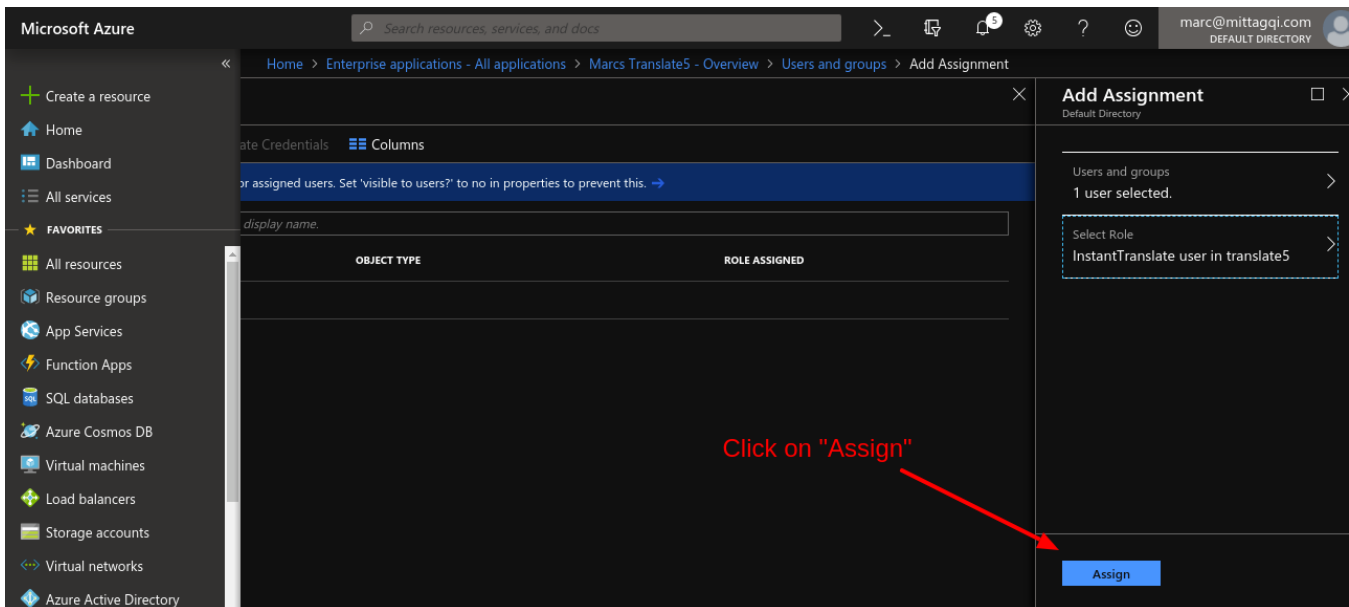
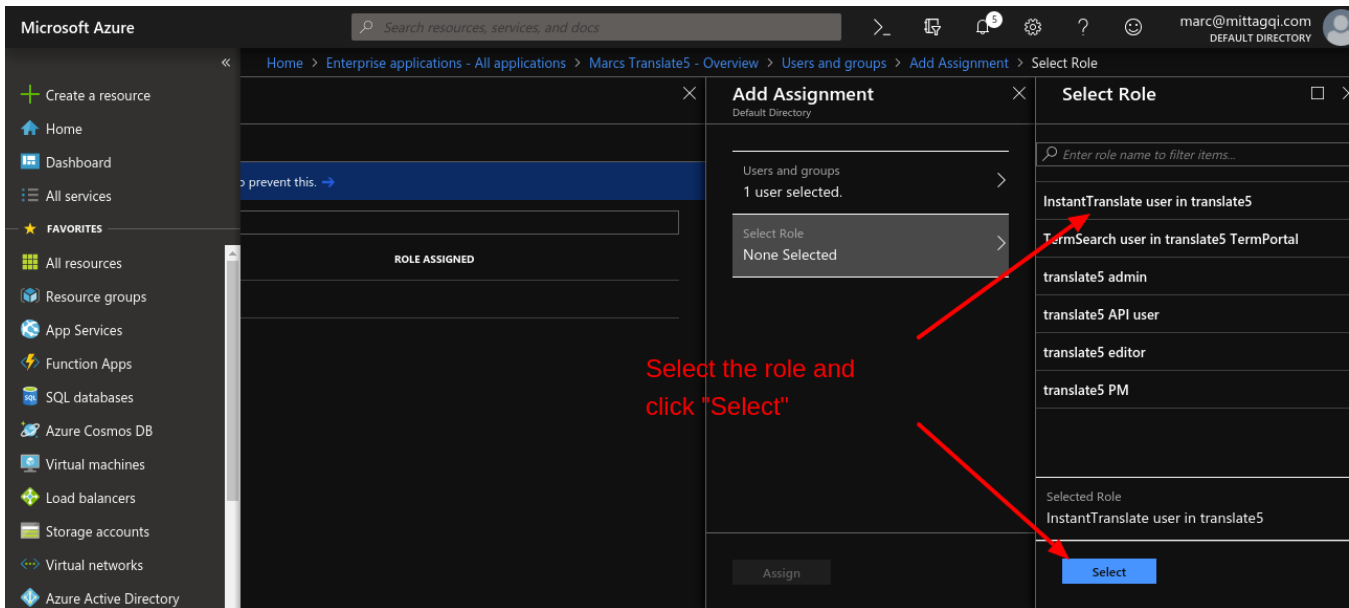
Default Directory

Users and groups
1 user selected.

Select Role
None Selected

Select a role, the user should have inside of translate5

Assign



Attention: To add more roles for the same user: Follow the next screen!

Microsoft Azure

Search resources, services, and docs

Home > Enterprise applications > All applications > Marcs Translate5 - Overview > Users and groups


Users and groups

Marcs Translate5

+ Add user Edit Remove Update Credentials Columns

The application will appear on the access panel for assigned users. Set 'visible to users?' to no in properties to prevent this. →

First 100 shown, to search all users & groups, enter a display name.

DISPLAY NAME	OBJECT TYPE	ROLE ASSIGNED
 Max Mustermann	User	InstantTranslate user in translate5

Attention: To add another translate5 role for the same user, you have to click again on "Add user" and repeat the previous steps for the same user with the additional role (in this case again for "Max Mustermann" with e.g. the role "translate5 editor". This is counter-intuitive, but is the way, Azure ActiveDirectory works.

Now the settings in Azure ActiveDirectory are complete. Proceed with the settings in translate5.