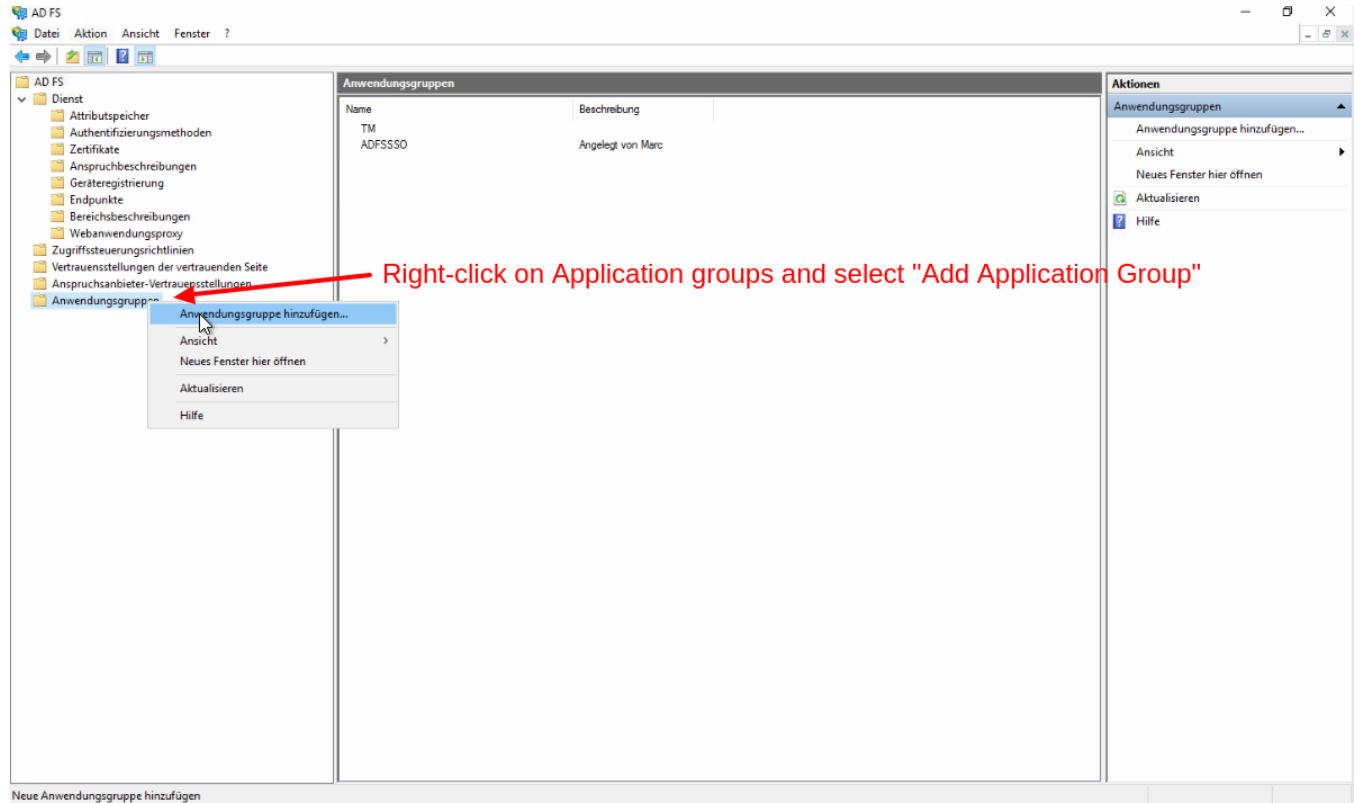
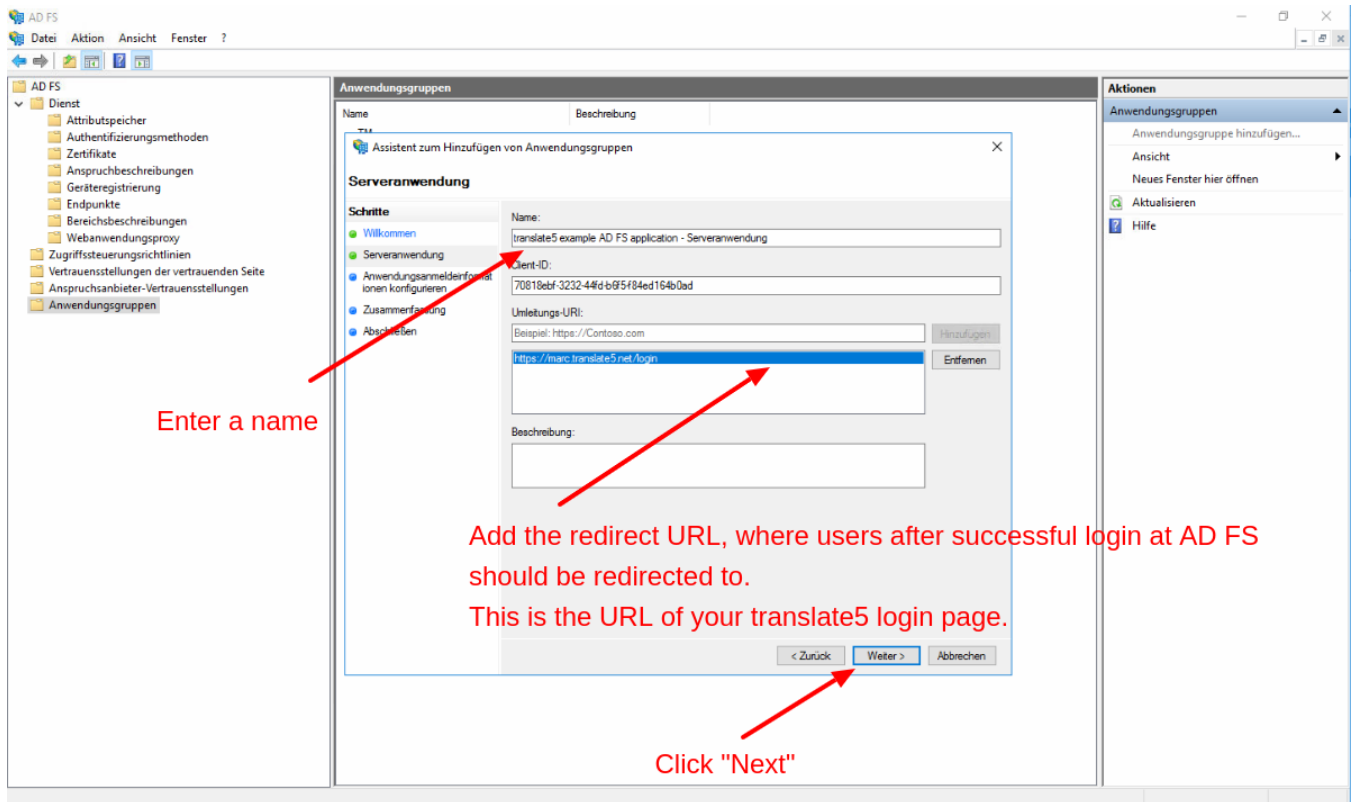
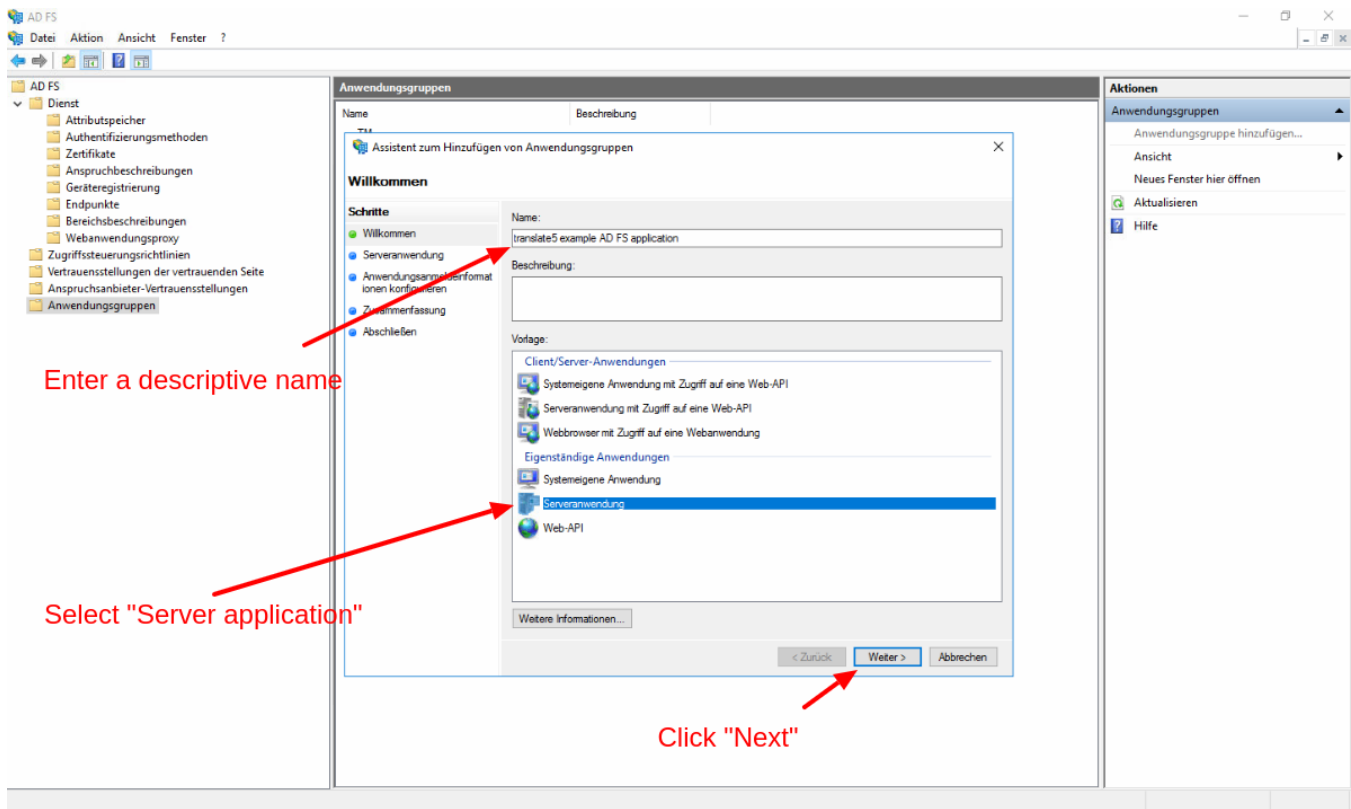


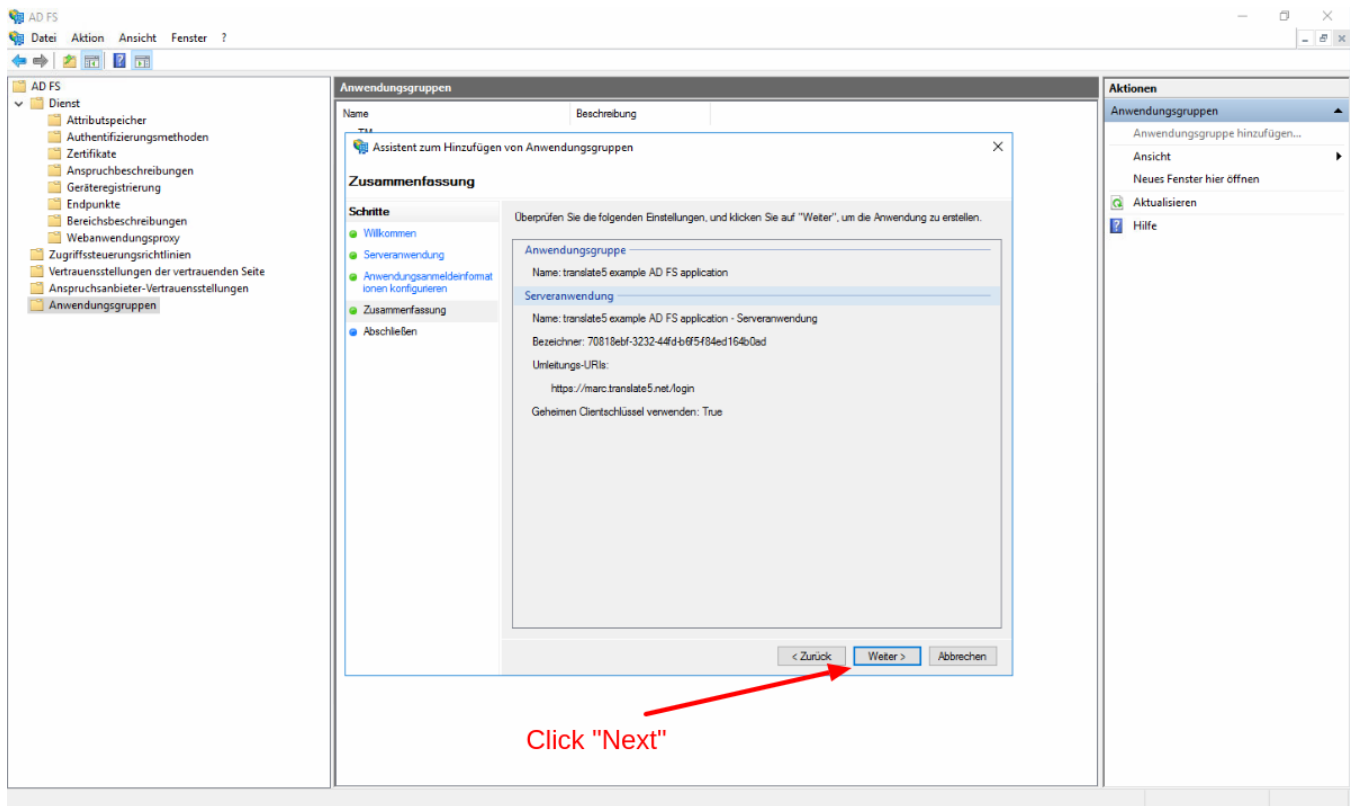
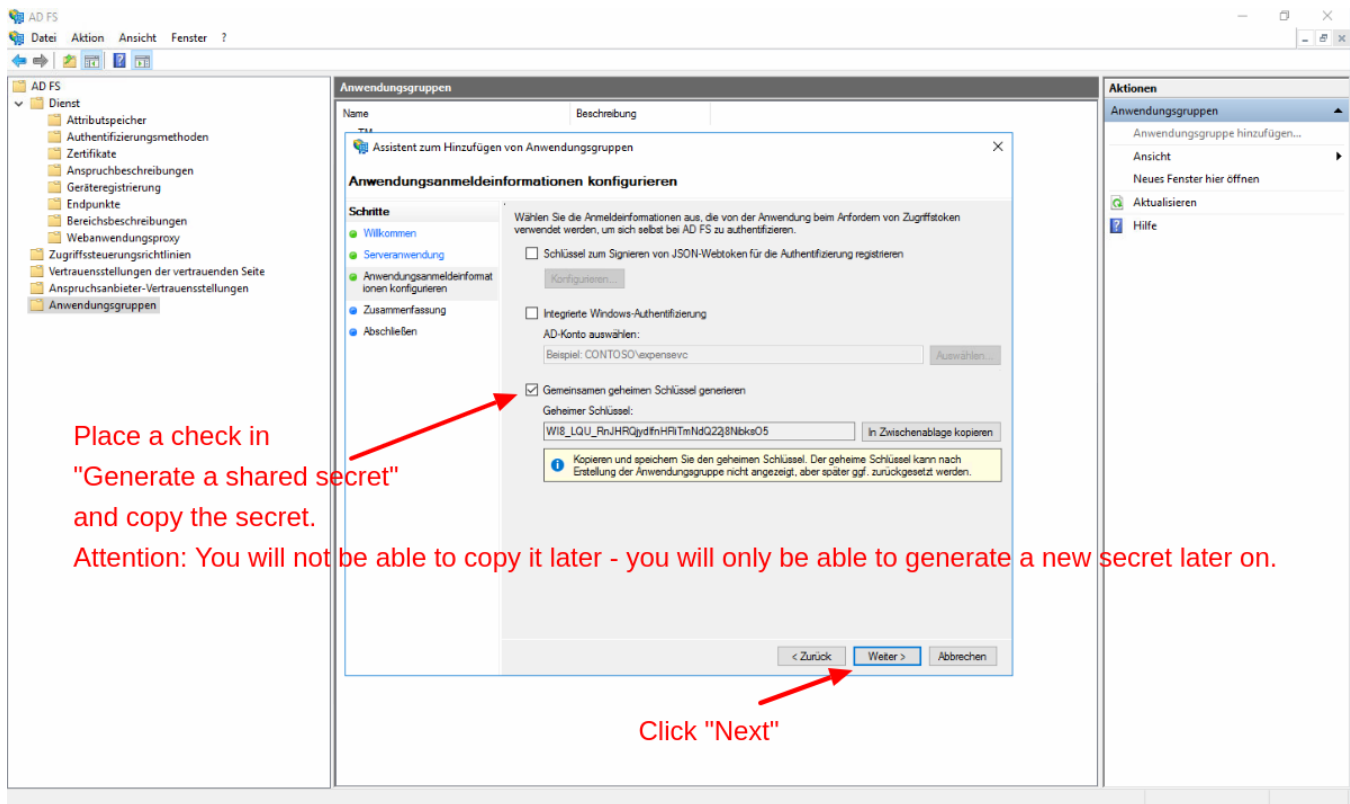
Configuration of Microsoft Active Directory Federation Services (MS AD FS) side

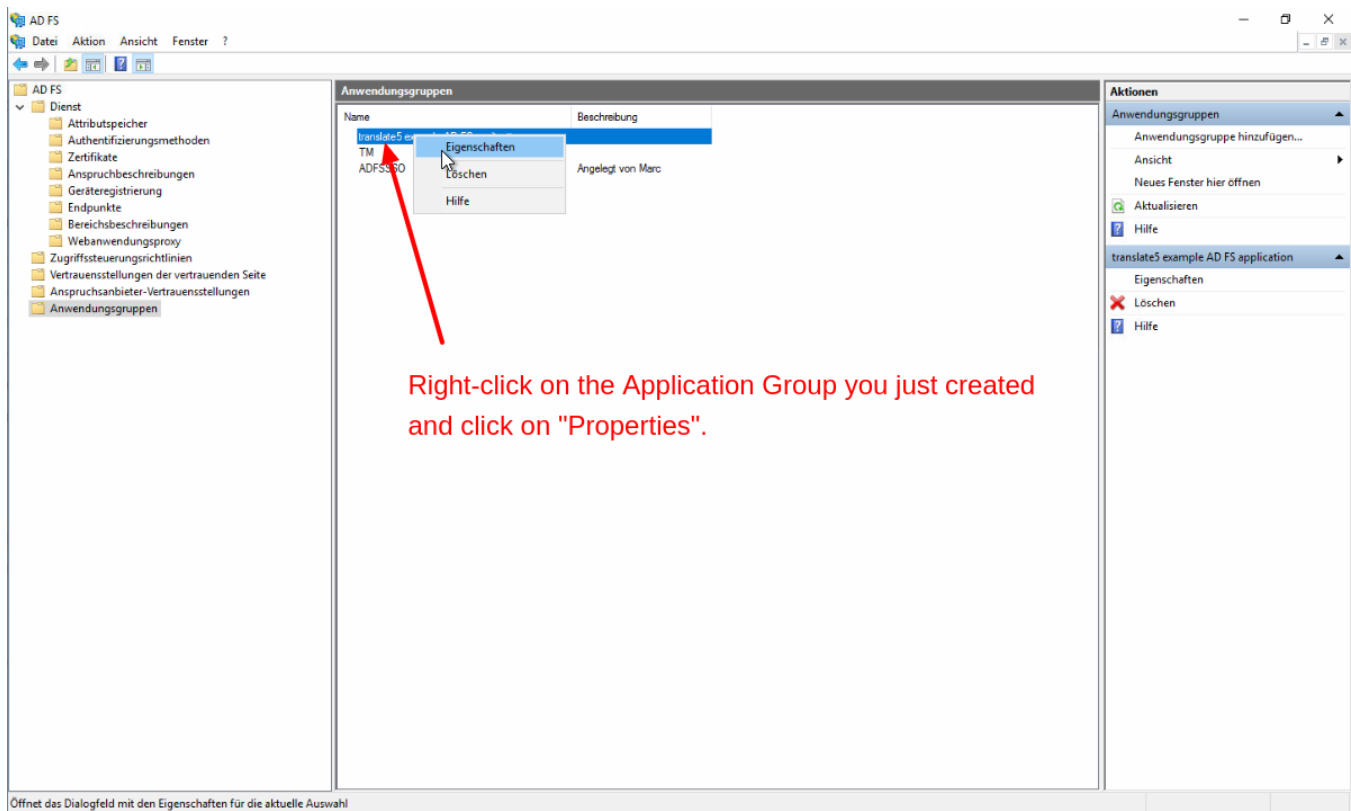
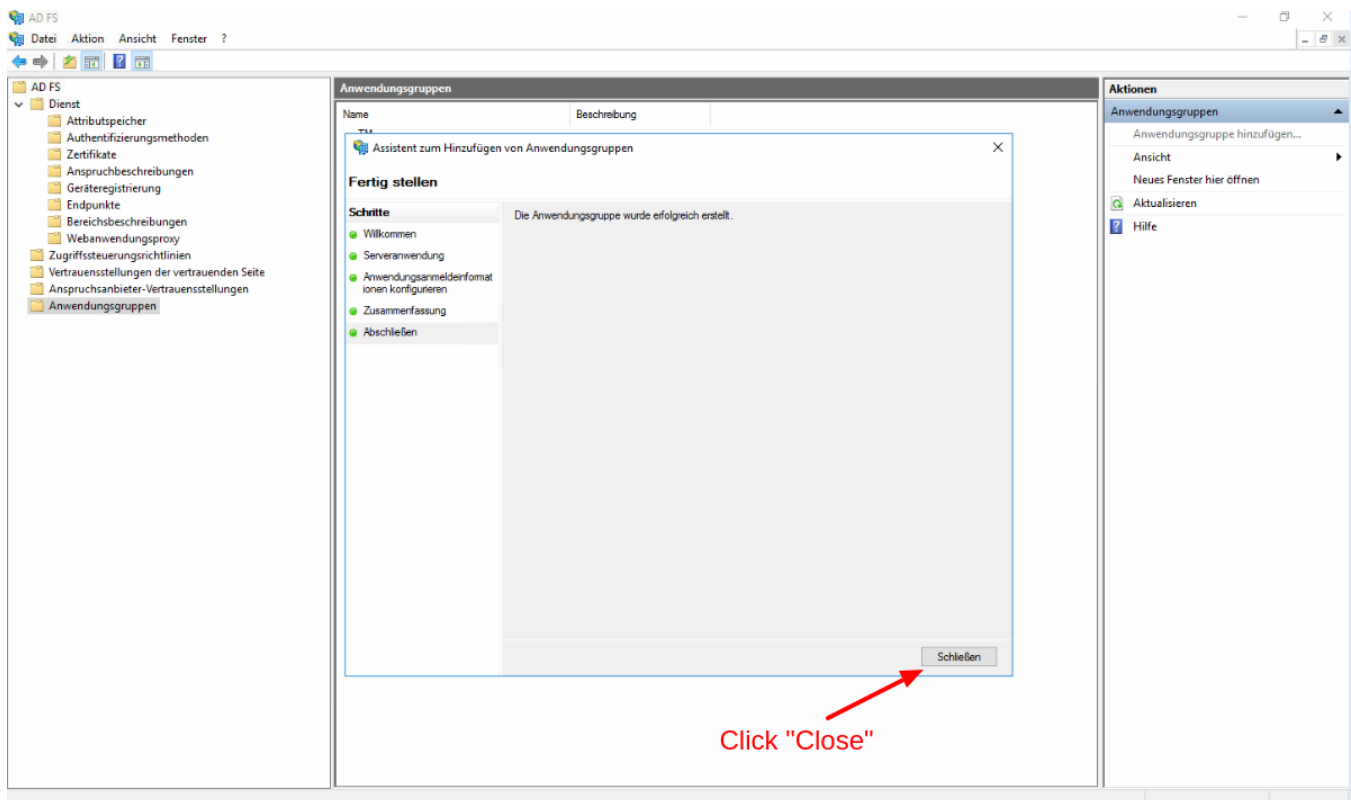
To use and configure Microsoft Active Directory Federation Services (MS AD FS) as OpenId Connect Server please follow the following steps.

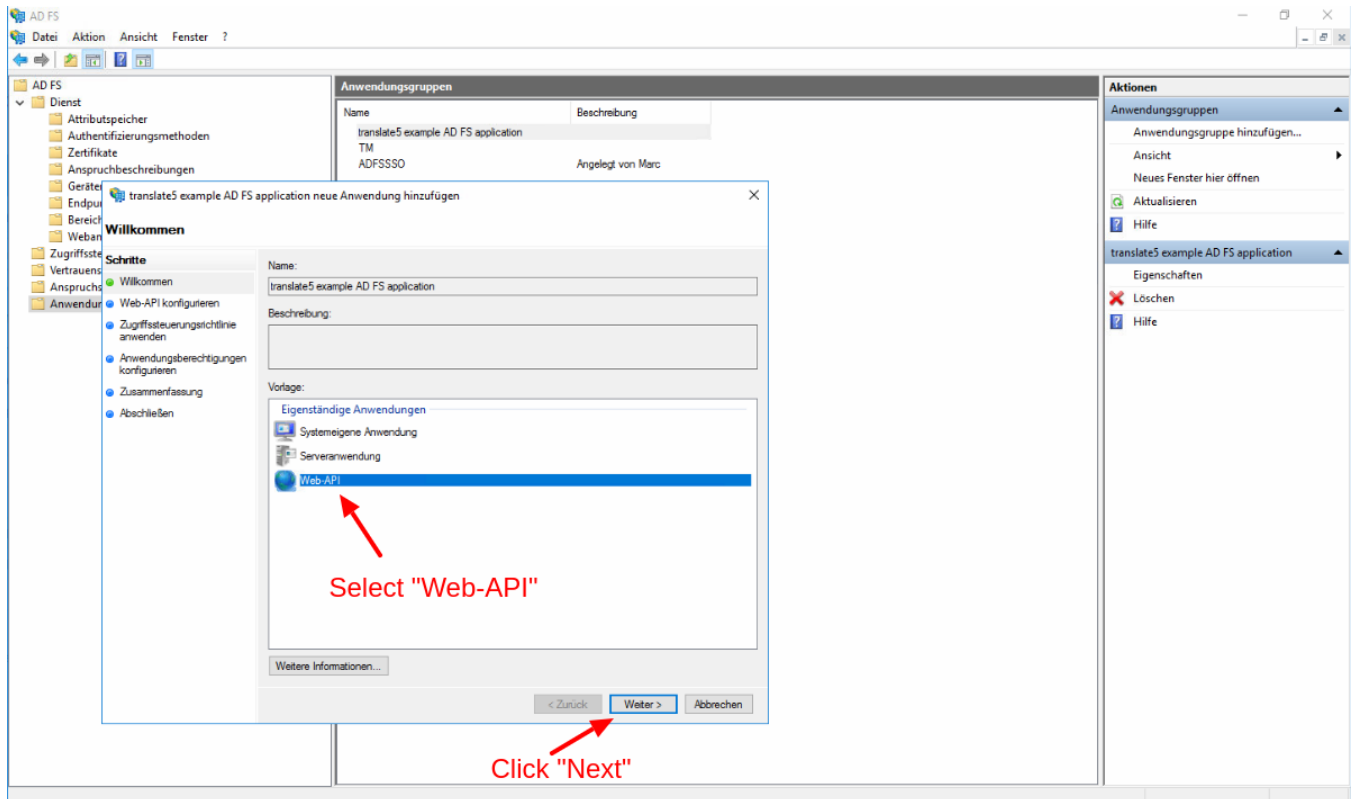
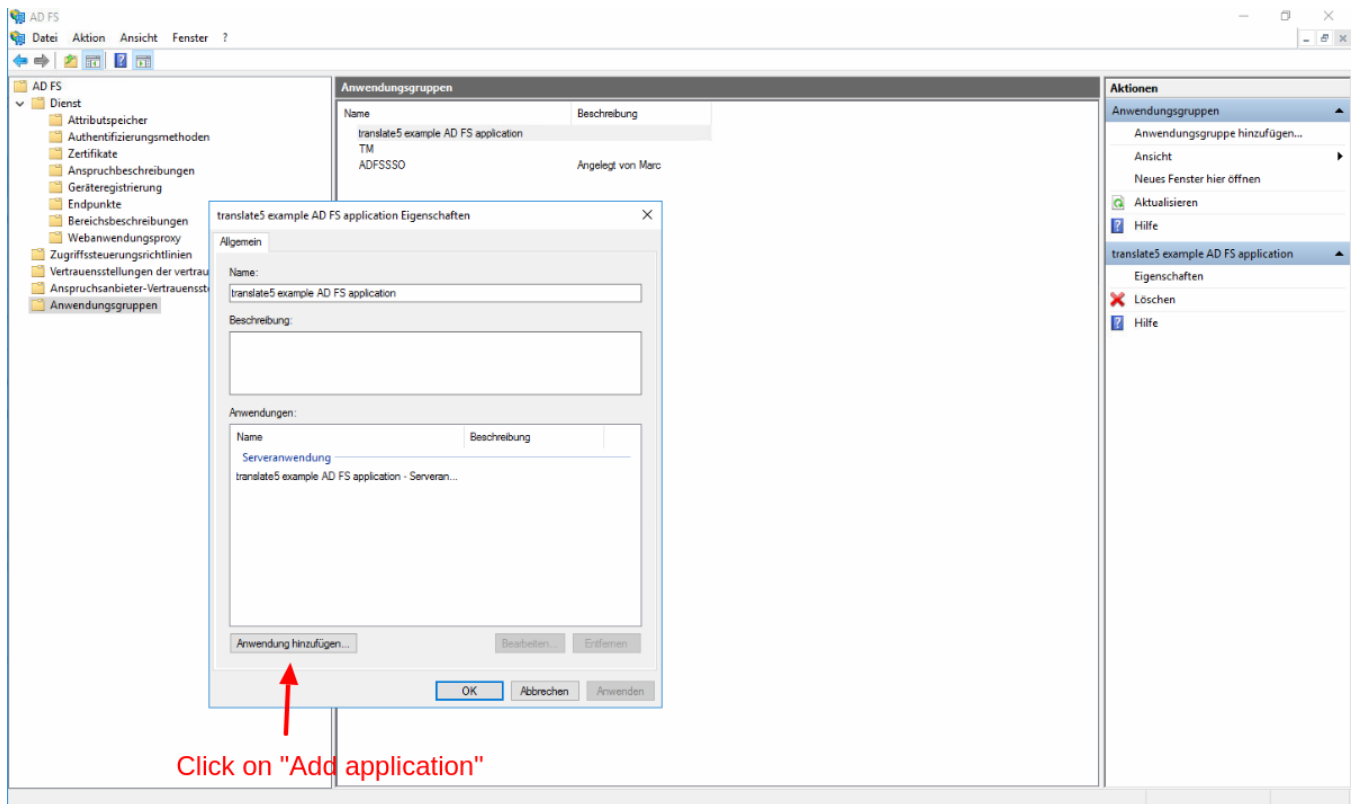
Please apologize, that the language on the screens is German - this is what we could use for demo. If you have an English server you are welcome to contribute to this manual with English screenshots.

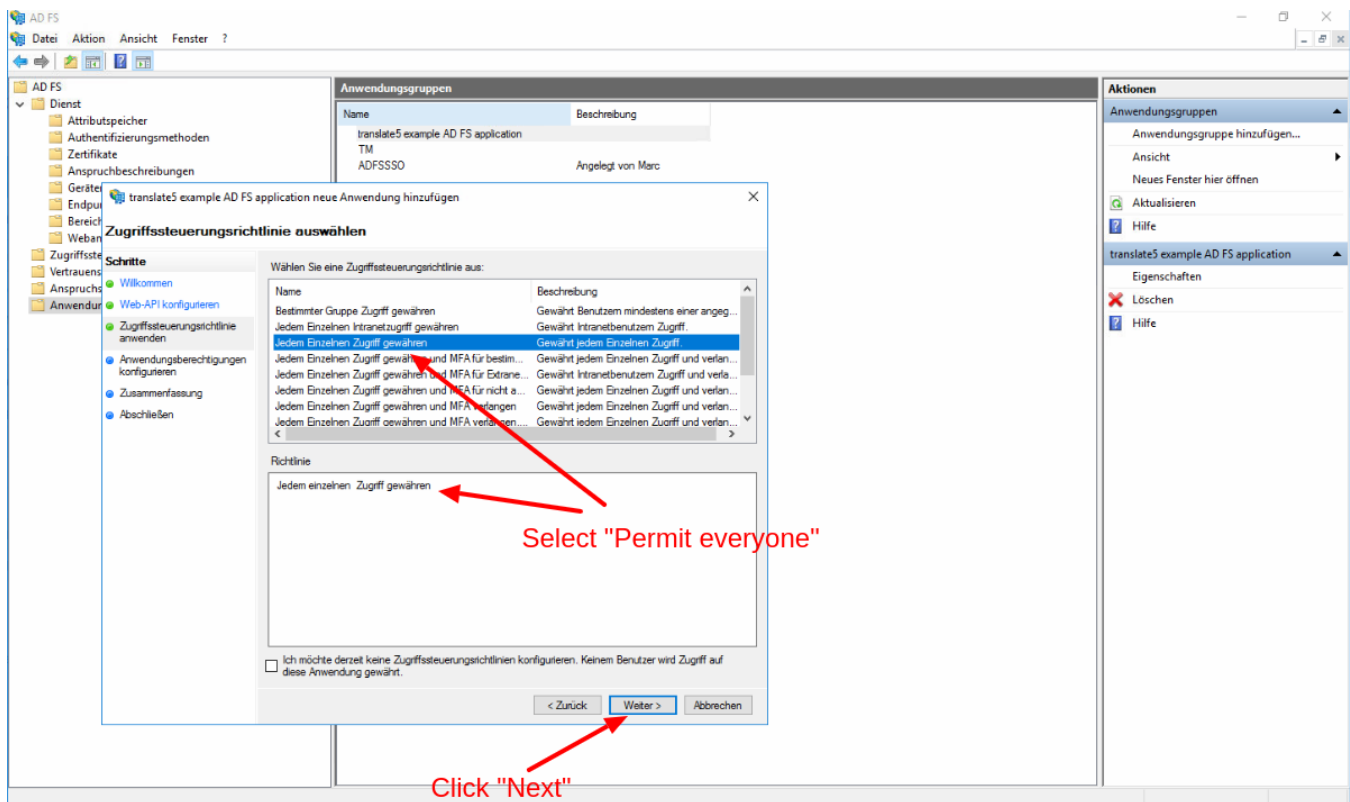
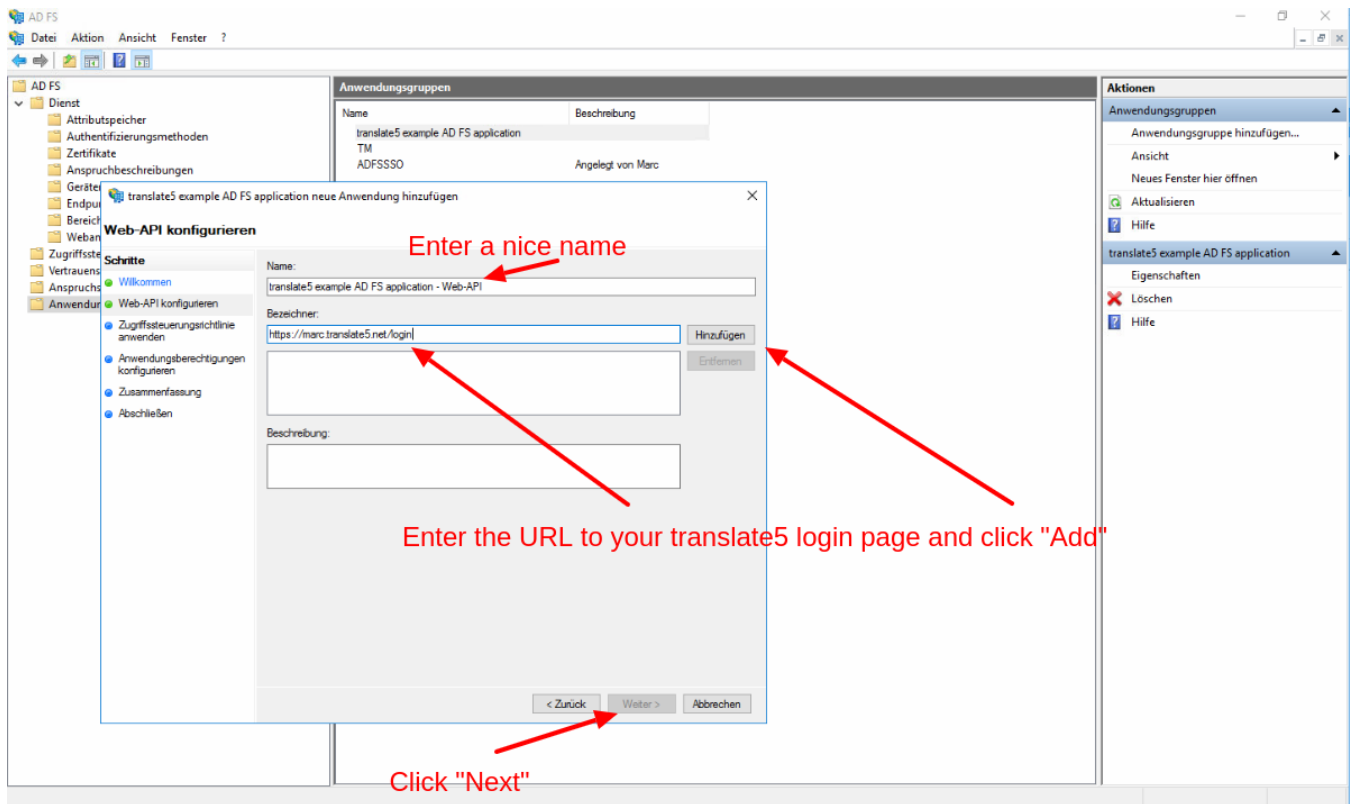


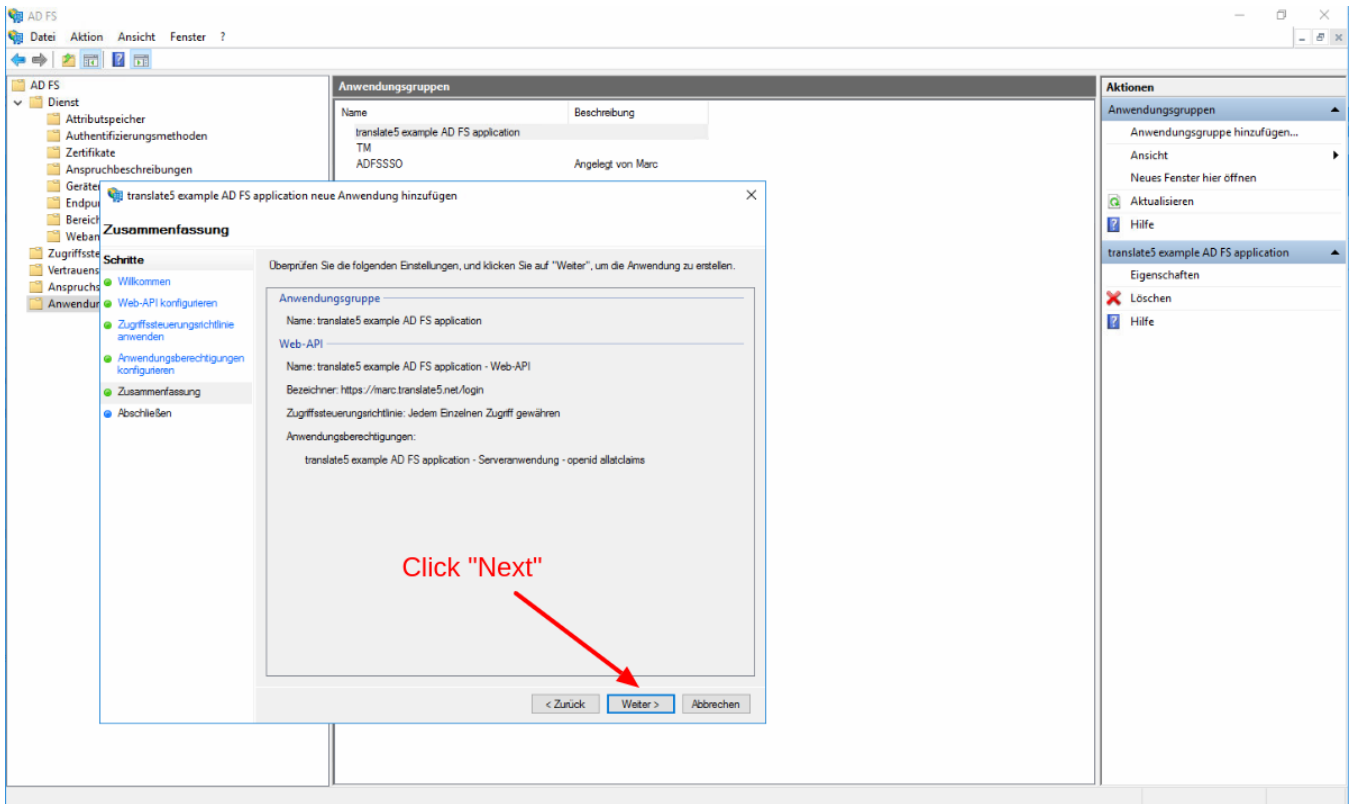
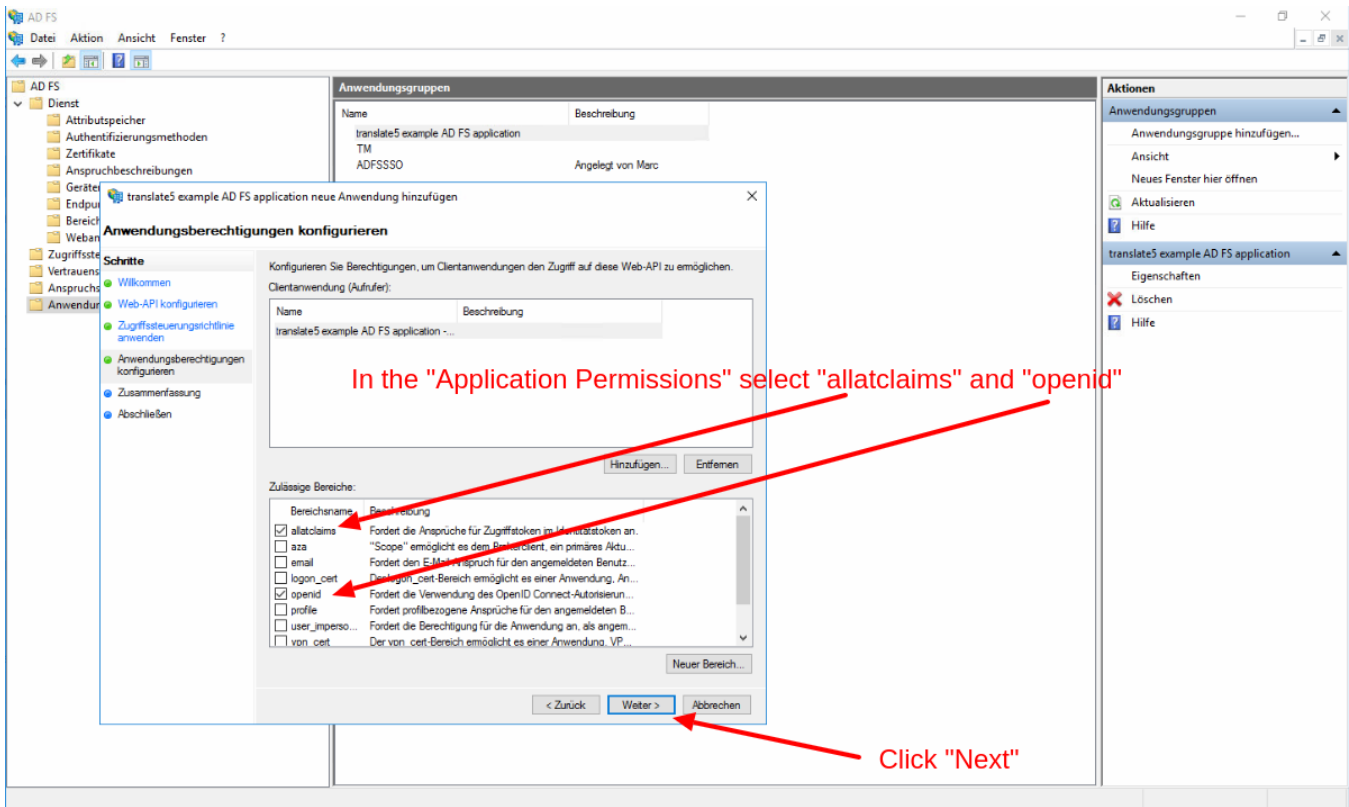


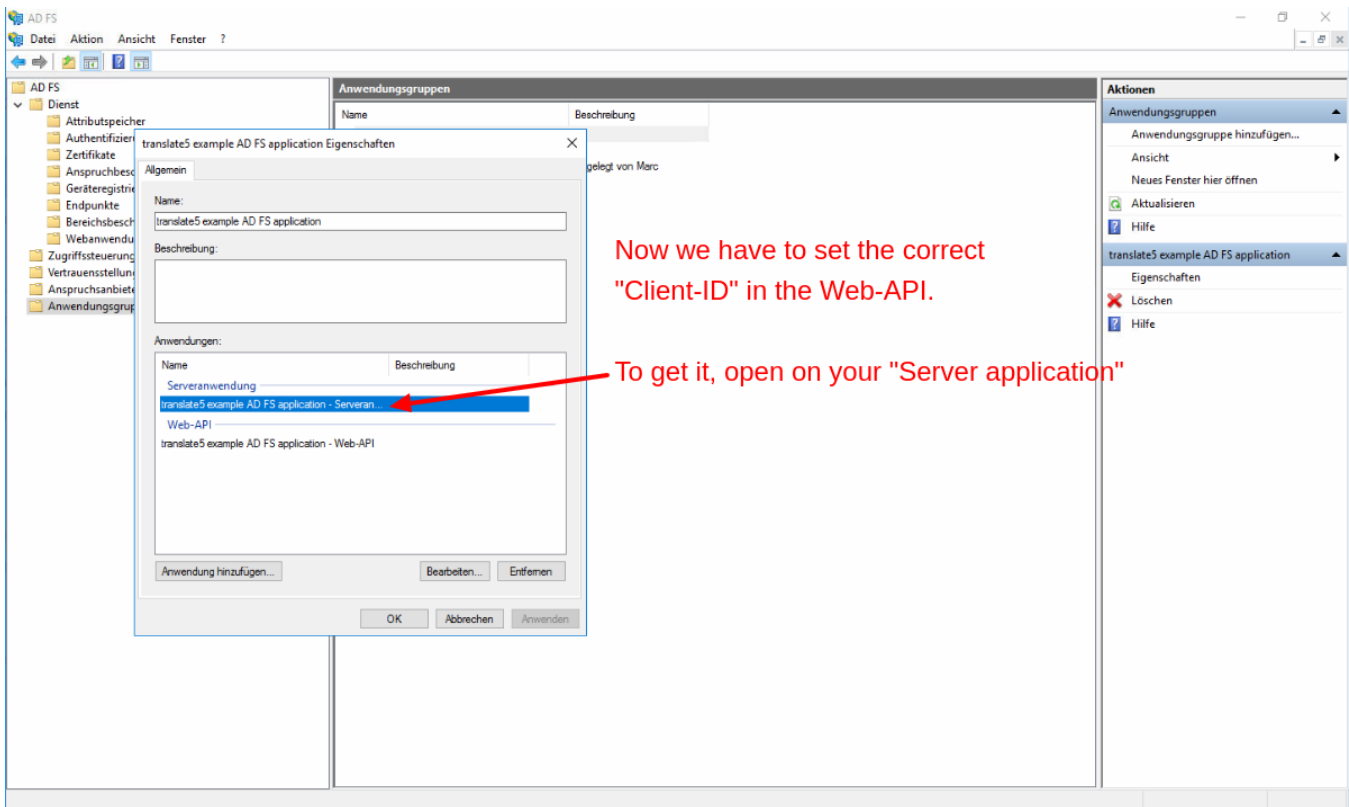
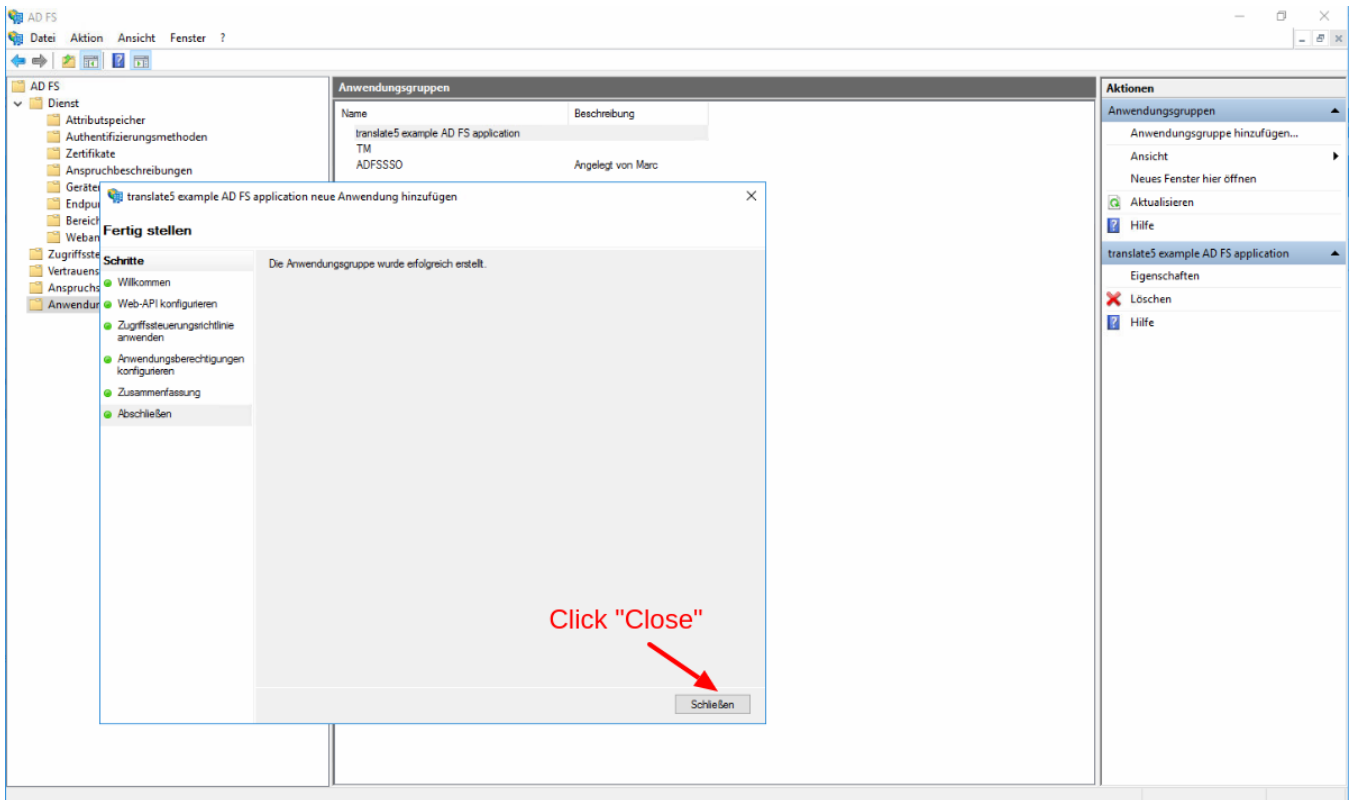


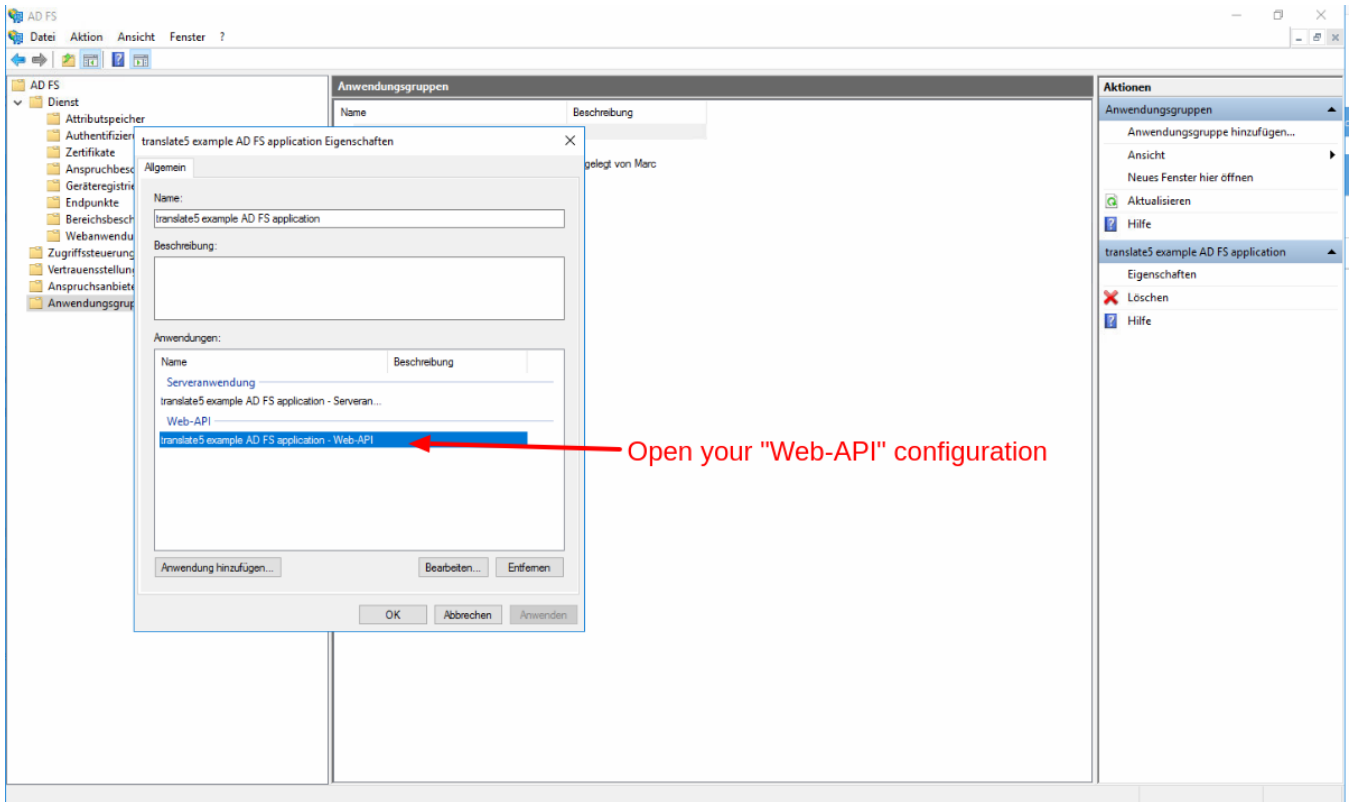
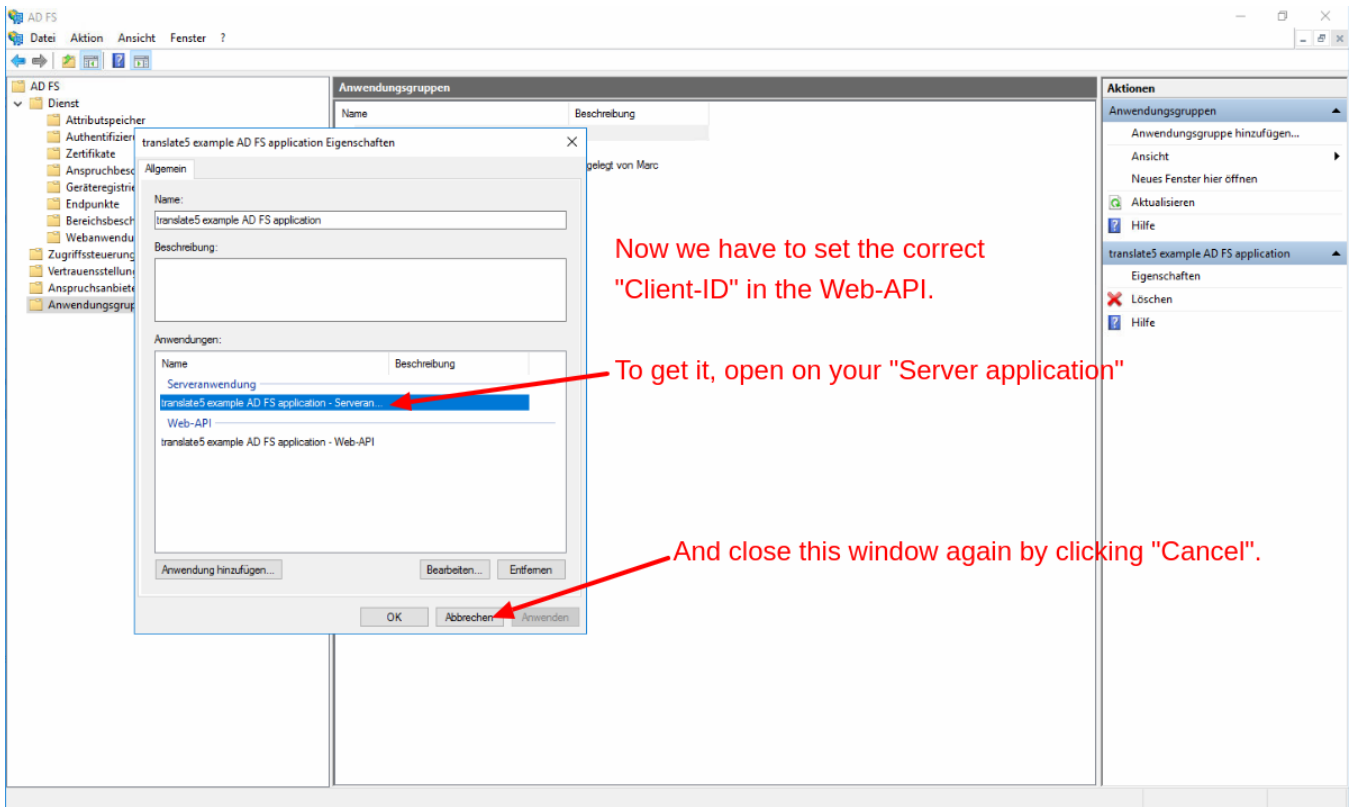


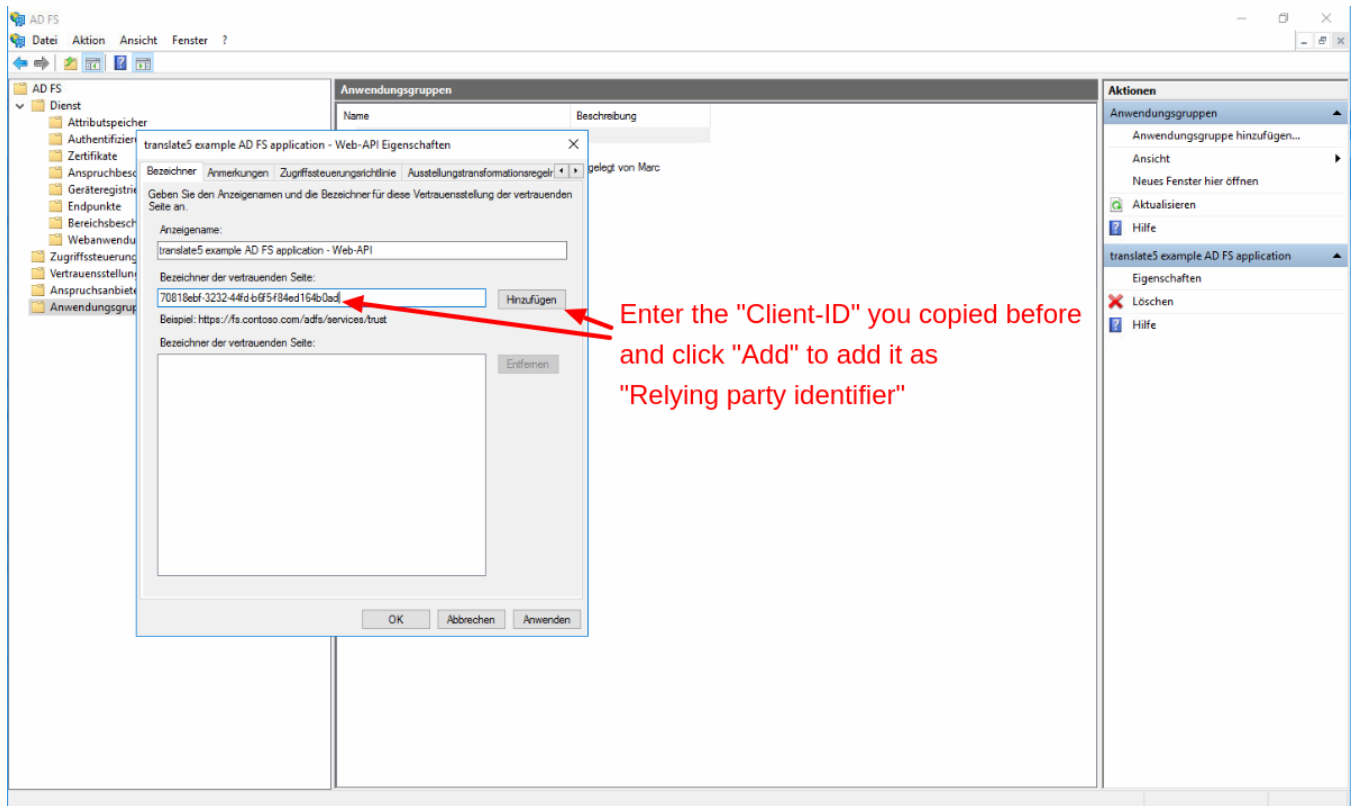
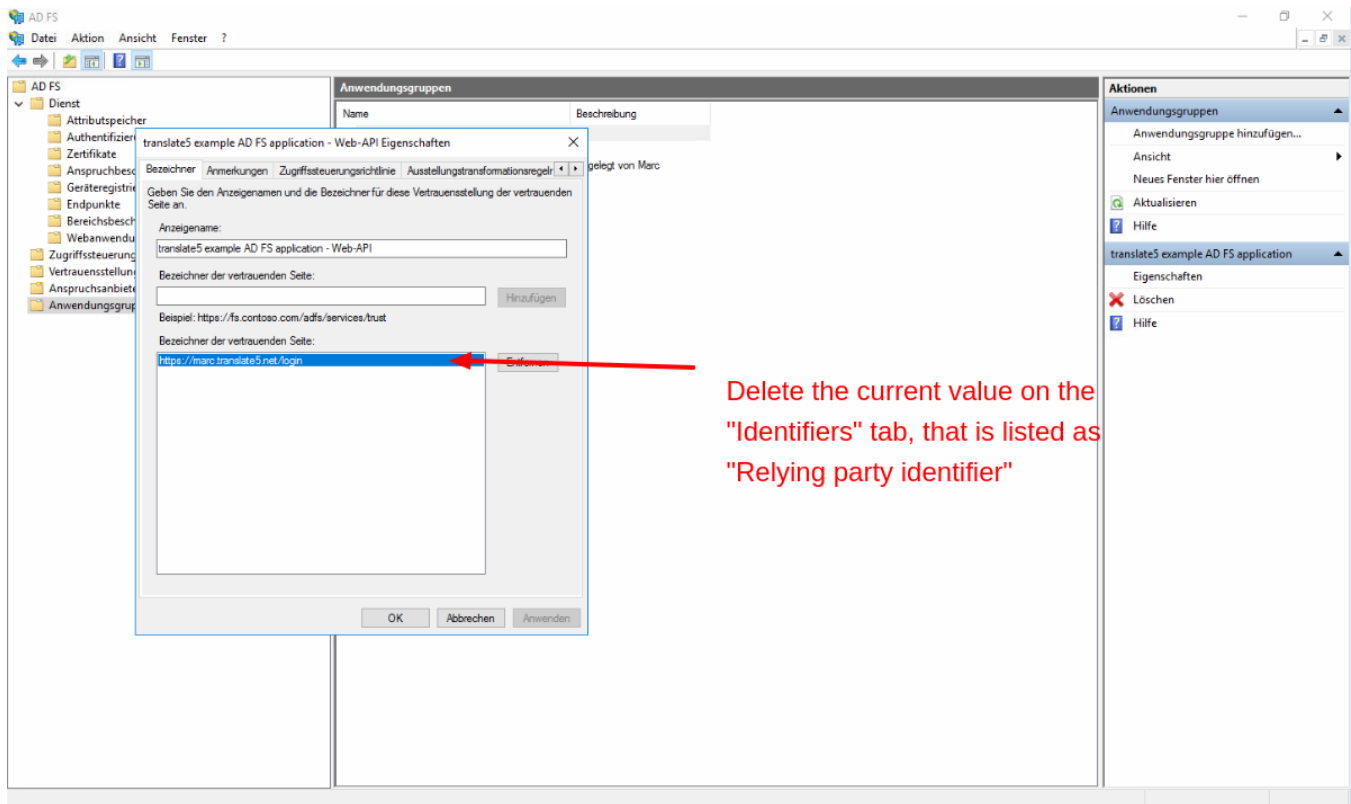


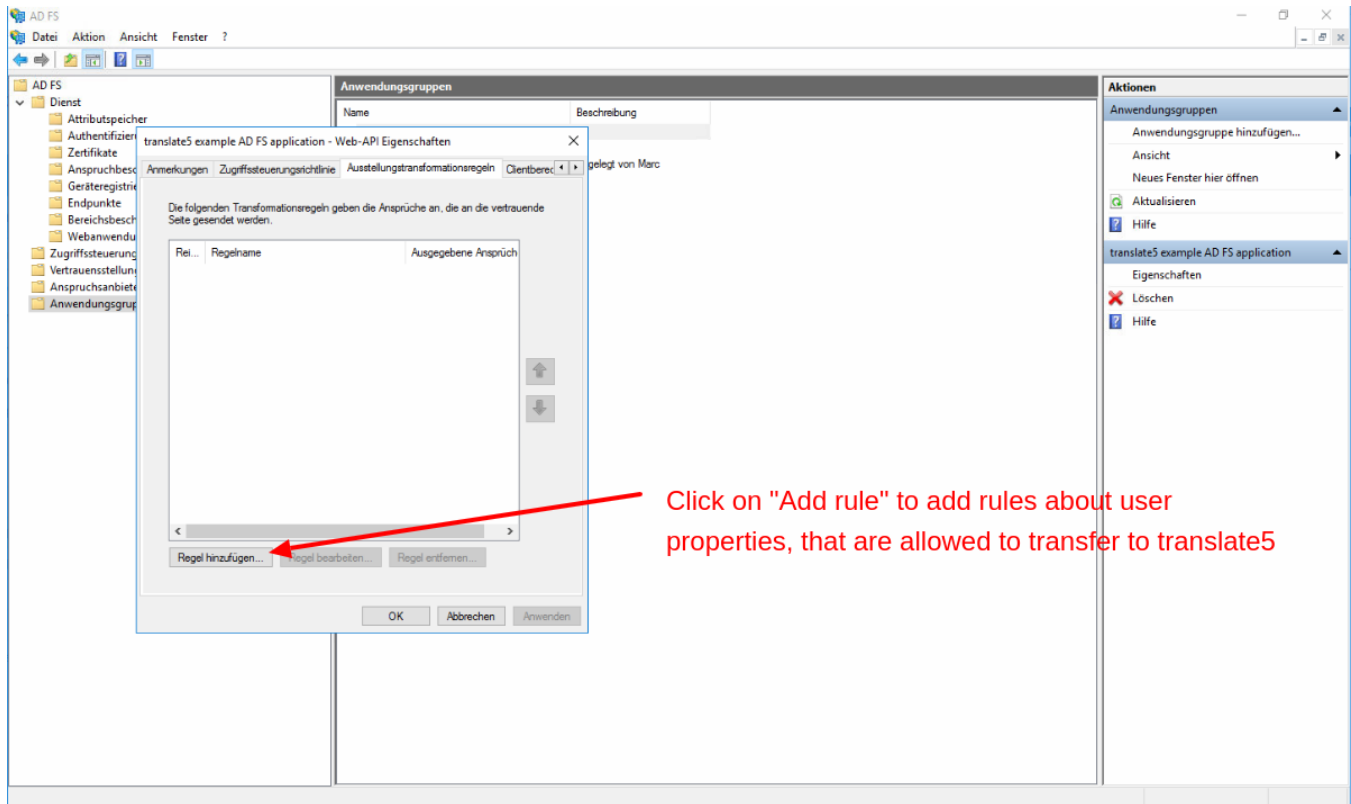
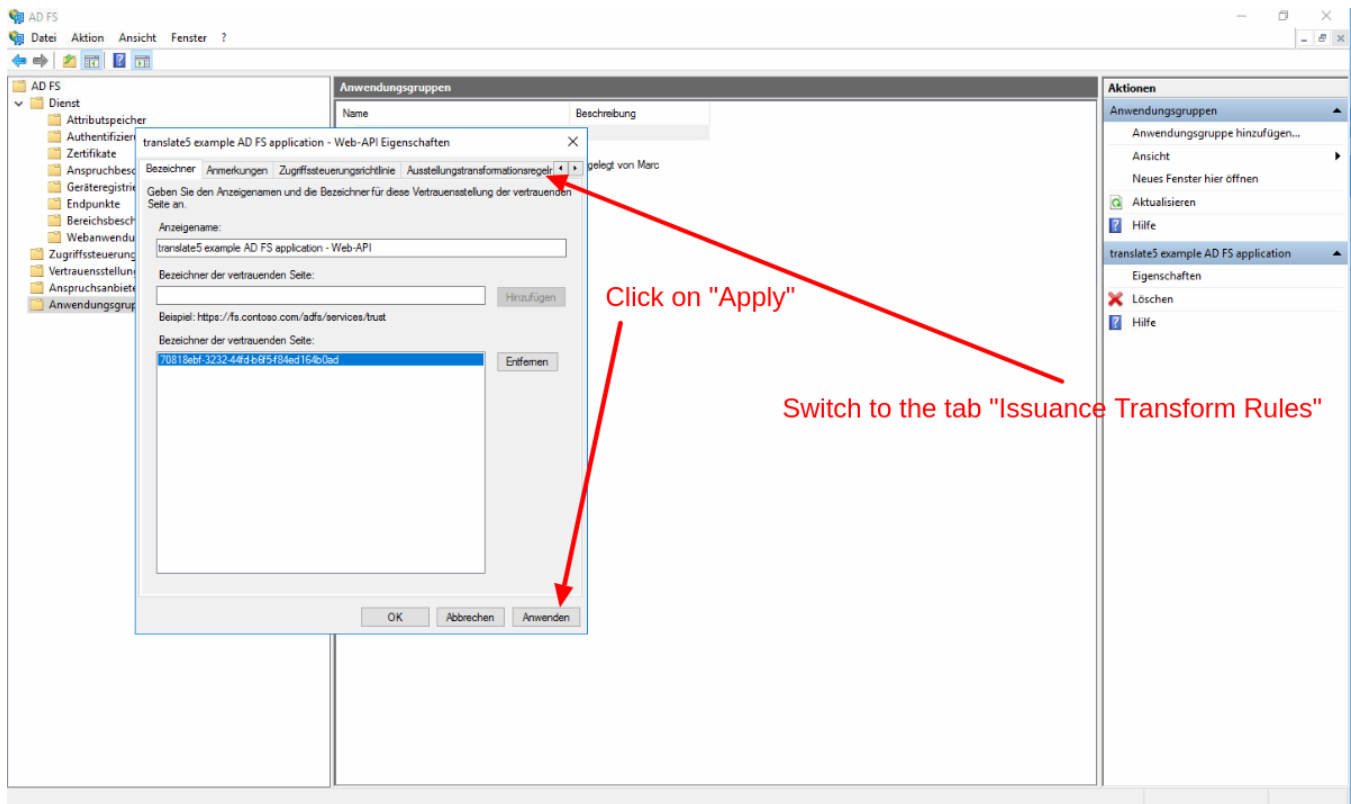


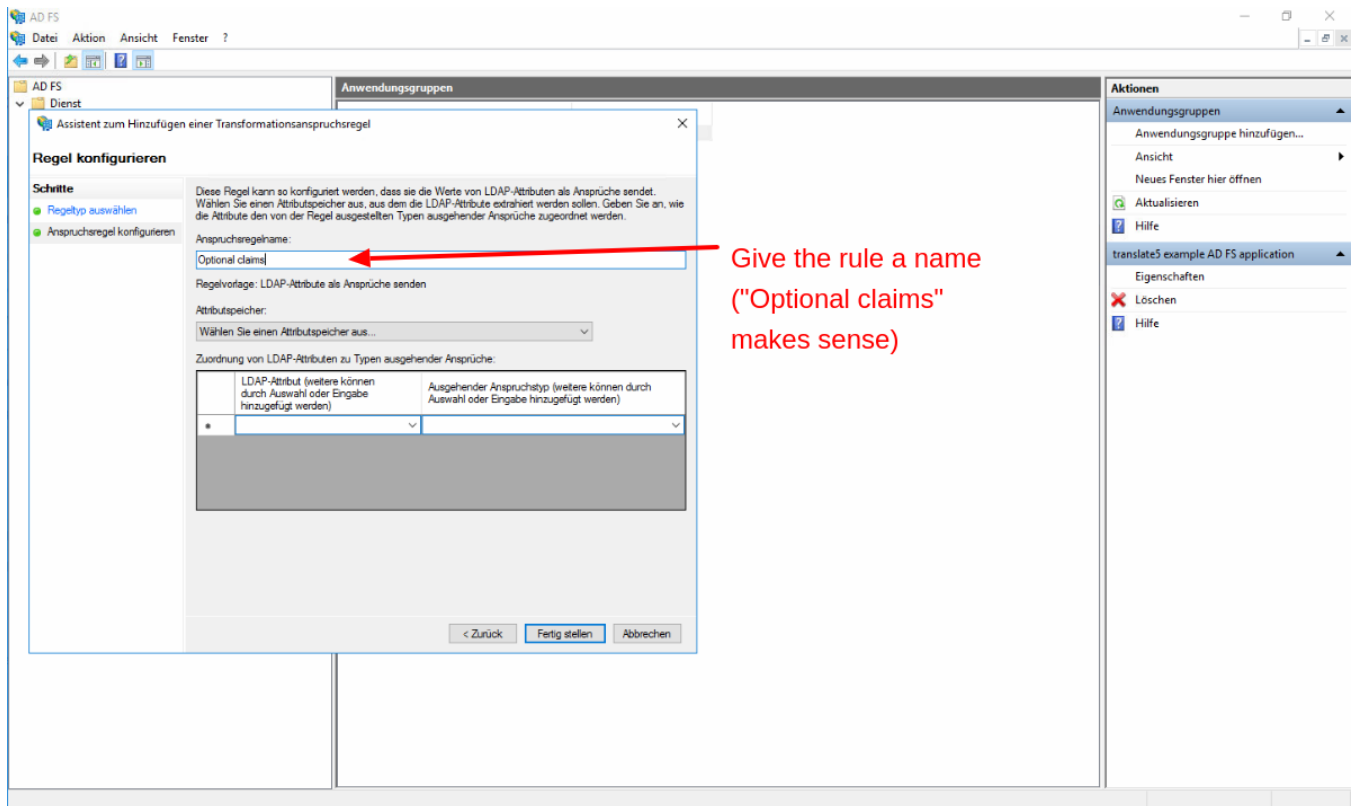
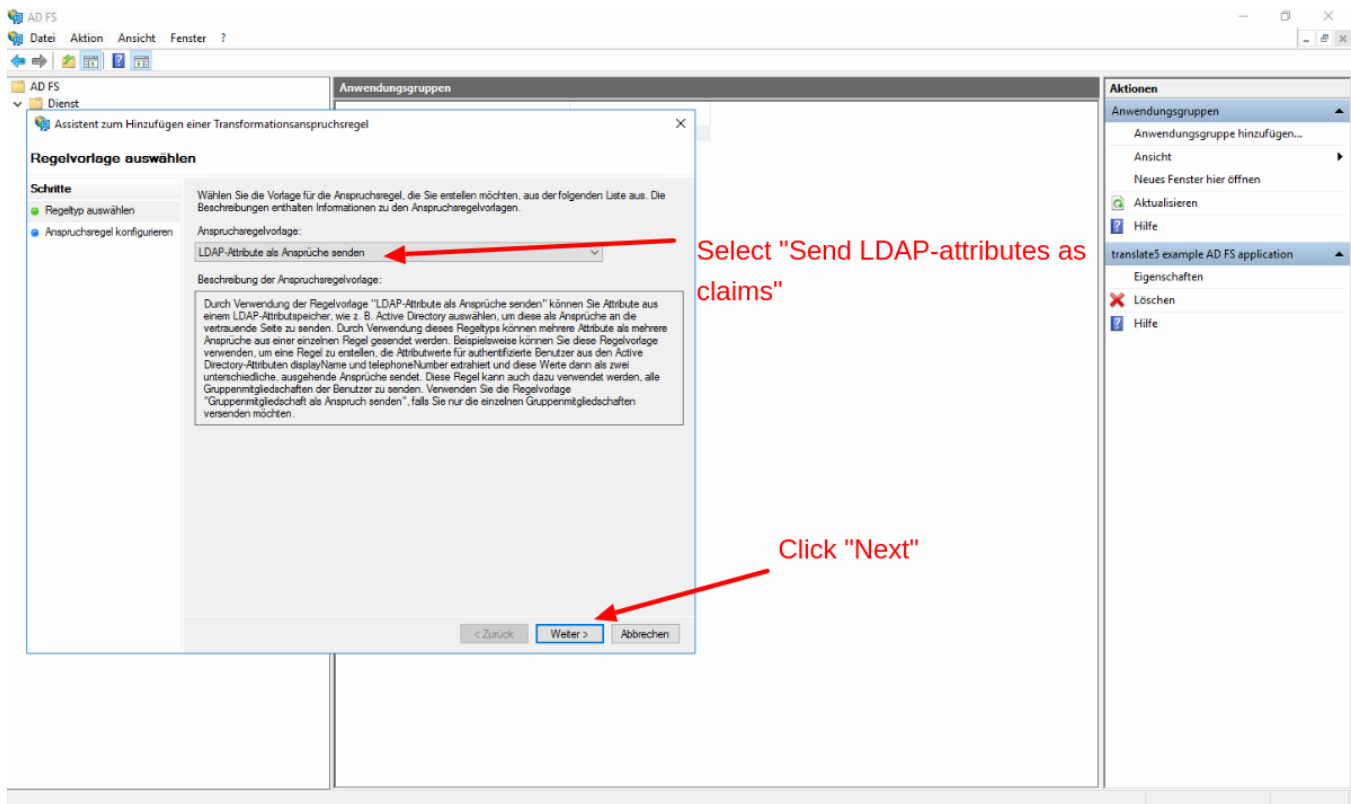


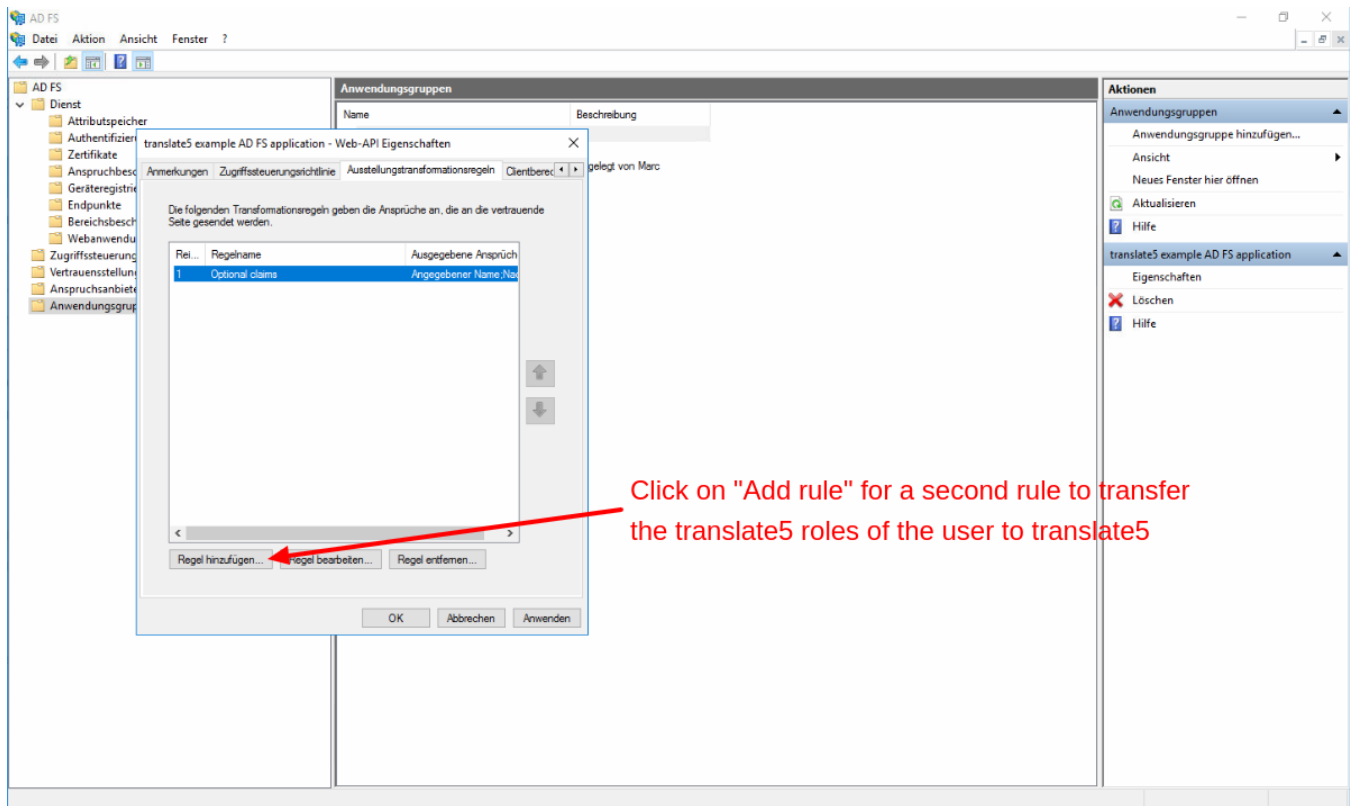
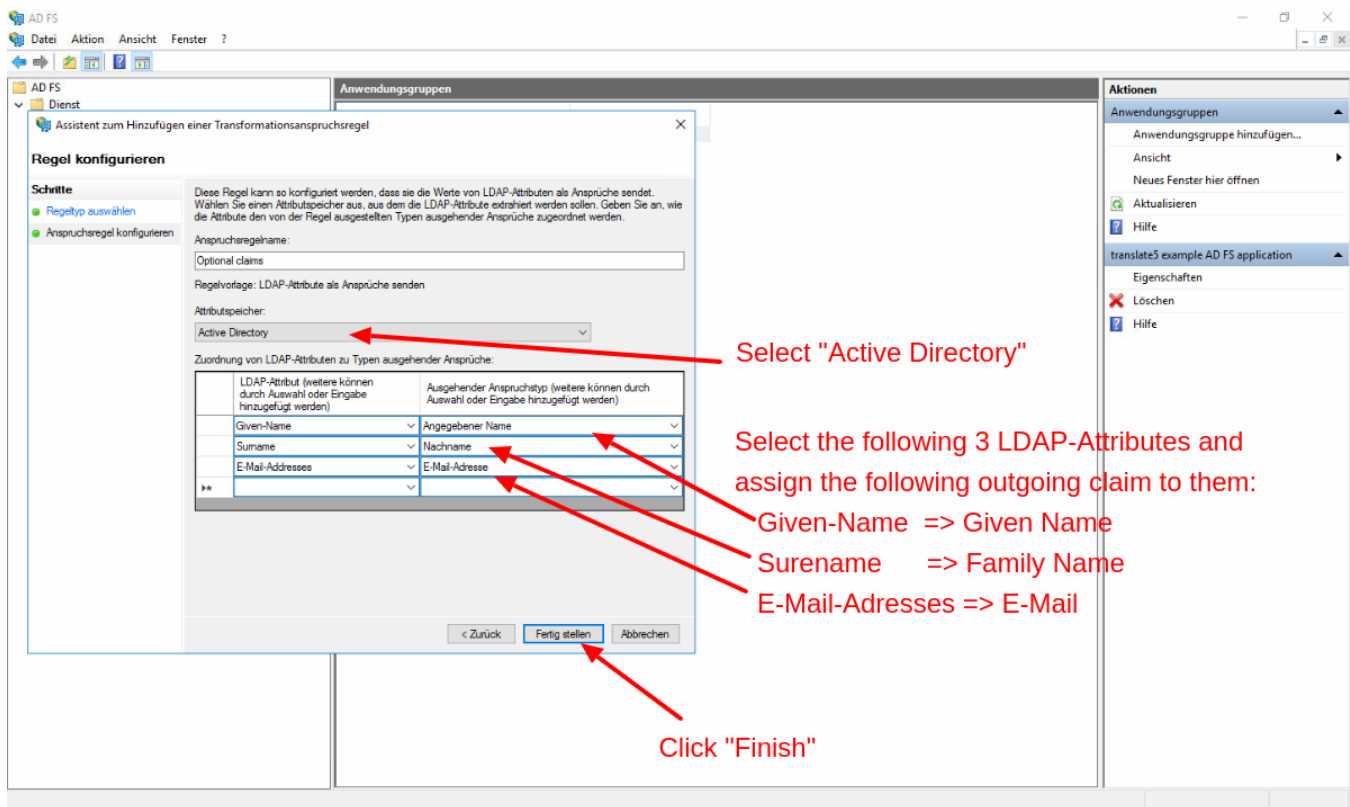


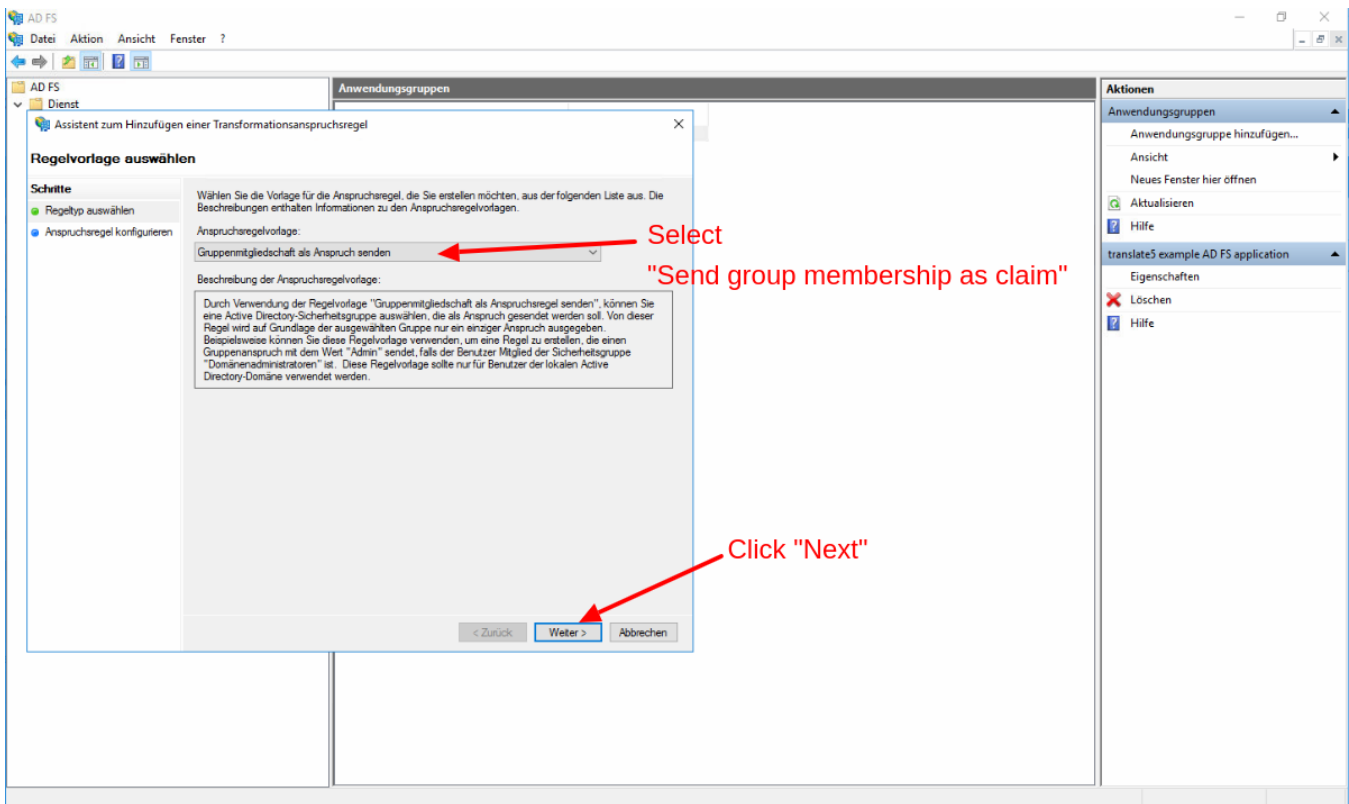












For available system roles, that can be entered in the next screen, please see this page: [System roles](#)

